

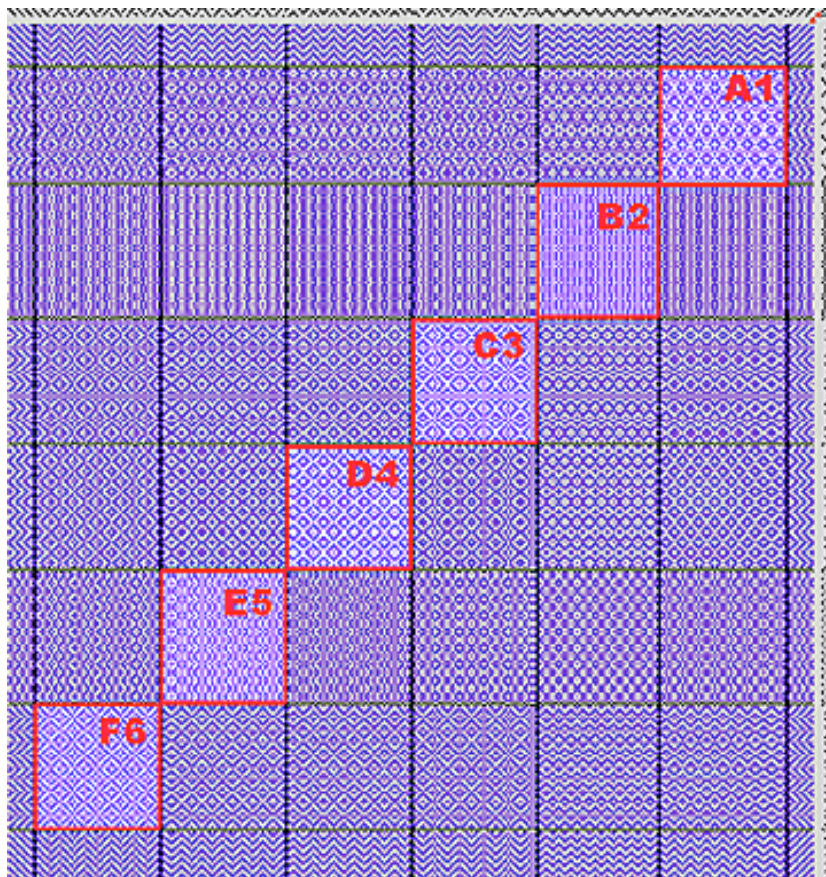
Pattern Name 4S Twill Gamp **Shafts Needed** 4
Pattern Source *A Handweaver's Pattern Book- Marguerite Davison (see indicated pages)*

Yarns 5/2 Perle Cotton **Warp Chain-** 2 yds (Add 28" for each additional sampler)
Warp- White or Ecu (6oz.), Black (1oz.) 409 ends (+2 floating selvages)
Weft- Color (3.5oz.), Black (.5 oz.) 20epi/20ppi
Width- 20.5" **Finished Dimensions** 18" x 26" (approx.)
Length- 26.5"

This is a 4 shaft twill sampler. This project makes a finished sampler 6 blocks wide by 8 blocks long (approx. 18.5" x 26"). The blocks are 3" x 3" on the loom. The draft is written for a 6 treadle sinking shed floor loom. On a table loom or 4 treadle loom, 2 shafts will have to be lifted for each pick, depending on the pattern. On a rising shed (jack loom), the tie-up should be inverted or you will be looking at the reverse side as you weave.

Sampler is numbered from Right to Left and Top to Bottom. Read the draft diagonally from the upper RIGHT corner.

- pw 1" plainweave hem
- ** borders of 2/2 twill
- A1 rosepath XIII #4- page 17
- B2 birds eye XII- page 13
- C3 German Birds Eye #1- pg 20
- D4 Ten Thread birds eye #5- page 19
- E5 Queen's Cord #VIII- page 18
- F6 Six Thread Herringbone II- page 25
- 7 Optional- Choose another treading
- 8 Optional- Choose another treading
- ** borders reversed
- pw 1" plainweave hem



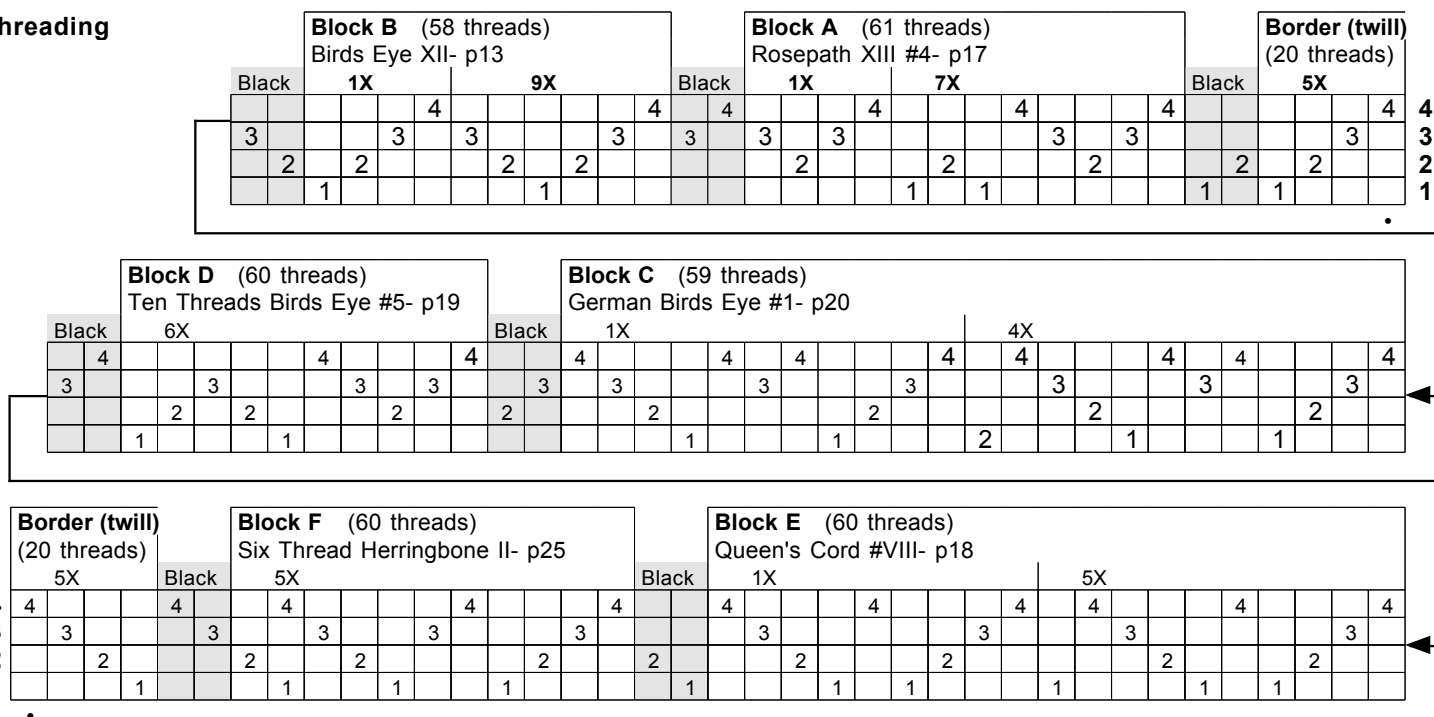
Block Order

* Border (twill)	F Six Thread Herringbone II	E Queen's Cord #VIII	D Ten Threads Birds Eye #5	C German Birds Eye #1-	B Birds Eye XII	A Rosepath XIII #4	* Border (twill)	
**	F*	E*	D*	C*	B*	A*	**	* Border (twill)
* 1	F1	E1	D1	C1	B1	A1	* 1	1 Rosepath XIII #4- p17
* 2	F2	E2	D2	C2	B2	A2	* 2	2 Birds Eye XII- p13
* 3	F3	E3	D3	C3	B3	A3	* 3	3 German Birds Eye #1- p20
* 4	F4	E4	D4	C4	B4	A4	* 4	4 Ten Threads Birds Eye #5- p19
* 5	F5	E5	D5	C5	B5	A5	* 5	5 Queen's Cord #VIII- p18
* 6	F6	E6	D6	D6	B6	A6	* 6	6 Six Thread Herringbone II- p25
* 7	F7	E7	D7	D7	B7	A7	* 7	7 Open-
* 8	F8	E8	D8	D8	B8	A8	* 8	8 Open-
**	F*	E*	D*	C*	B*	A*	**	* Border (twill)

Warp Color Order

White	20		60		60		60		59		58		61		20
Black		2		2		2		2		2		2		2	

Threading



General Instructions

Thread the loom according to the threading diagram. Blocks are about 60 threads separated by 2 threads of Black between each threading block. (See threading diagram for exact thread counts.) There are border blocks and floating selvages at each side. (The floating selvages are extra ends at each edge. They are NOT threaded in a heddle, but are sleyed in the reed at the edge of the weaving, they serve to keep the edges of the twill borders straight, avoiding long floats.)

Weave a header of thin to medium scrap yarn. Throw 3 picks of plainweave WITHOUT beating. Beat all 3 at the same time. This should spread the threads to an even spacing. Weave another inch of header yarn. (To weave with the floating selvedge: Enter the shed OVER the selvedge thread. Exit the shed UNDER the selvedge thread; a boat shuttle does this automatically.)

Begin weaving with 1" of Plainweave (tabby)

Weave the twill border (*) for 1". Weave 2 plainweave picks of Black.

Weave 1st block (1). Weave 2 picks of Black according to the treadling.

Weave 2nd treadling block (2). Weave 2 picks of Black....

... Continue through all treadling blocks. Make sure to weave the 2 picks of Black between blocks.

Optional (after Block 6):

After weaving the 6th block (6), you may weave 2 blocks of your own treadling design, or choose another treadling from the Davison book. **Insert 2 shots of BLACK plainweave between these blocks and after the final one.**

Weave the border again reversed (see treadling).

Weave 1" of plainweave. Weave scrap yarn for an inch to finish.

Remove sampler from the loom, zigzag stitch the plainweave edges on a sewing machine, remove scrap header material, finish by washing in warm soapy water. Dry flat and press while damp. Hem top and bottom with a 1/2" hem. (Turn under 1/2", turn again, stitch with white or natural thread.)

