

WEAVERS GUILD *of Greater Kansas City*

April 2023 Newsletter

Note from the Co-Presidents Cynthia Smith and Lynette Beebe

Happy Spring!

Though it's still a little chilly outside, spring is finally here! This month we are restarting our annual tradition of taking a field trip to the Kansas City Art Institute's fiber department! This is especially meaningful to me (Cindy) because I'm an alumni of KCAI and that's where I learned how to weave! Being a fiber major was a fantastic experience, and the program is a paradise for any fiber fanatic. Now that those days are long gone, it's wonderful to go back, tour the department, and see what current students are working on. KCAI also has events that are open to the public, such as lectures and art shows. This year's BFA Exhibition opens April 14 and runs through May 13 at the H&R Block Artspace and KCAI Gallery. The spring End-of-Semester show opens May 5th at 5:00 pm. Every department throughout the school is open for you to visit and see what the students have been working on!

Remember, the buildings at KCAI are generally locked, so please arrive at either Fiber Department door by 10 AM! There are 2 entrances. The preferred one is on the north side of the building (with ample parking.) An entrance for those with problems using stairs is located on the south side. However, parking on the south side is extremely limited. The program will run until about noon, and then we will have the opportunity to lunch at the dining hall.

April Weavers Guild Program

KCAI studio visit!

Fiber Department, Kansas City Art Institute
The Warehouse
4218 Walnut Street
KC, MO 64111

2023 WEAVERS GUILD OFFICERS

Lynette Beebe, Co-President
Cynthia Smith, Co-President
Sylvia Crawford, 1st VP, Programs
Ellen Kardell, 2nd VP, Newsletter
Erin Taylor, 3rd VP, Workshops
Pamela Jenkins, Secretary
Kate Webb, Treasurer
Gail White, Scholarship Chairperson

MEETING AGENDA

Meetings are on the second Thursday of each month at Westwood City Hall, 4700 Rainbow Blvd., Westwood, KS.

Guests are always welcome.

9:30 am Coffee, Set Up, Social Time
10:00 am Regular Meeting
10:30 am Show & Tell
11:00 am Treats/Break
11:15 am Program
12:30 pm Cleanup

Meeting minutes are published on the Guild website:

[Meeting Minutes Archive](#)

MEMBERSHIP BENEFITS

- ▶ Makers Fellowship
- ▶ Weaving Mentors
- ▶ Scholarships
- ▶ Guild Library
- ▶ Monthly Show & Tell
- ▶ Creative Hand Show & Sale
- ▶ Dual membership in
- ▶ KC Fiber Guild & KAWS

More info online at
www.kcweaversguild.org

Contact us via email at
weaversguild@gmail.com

KCWG Programs & Activities

To suggest a program, contact Sylvia Crawford at crawfordsylvia56@gmail.com.

Inclement Weather Policy – If the KCMO School District is closed due to inclement weather, our Guild meeting that day is canceled. Be sure to check for school cancellation before getting on snowy/icy roads. School notification will be made using Major radio and television news stations, the homepage of the KCPS website, KCPS Facebook and Twitter pages.

creative
hand
2023

Kansas City Fiber Guild & Weavers Guild combined to put on an amazing sale this year! The leadership team for the Creative Hand Show and Sale has opportunities available to work with creative and hard working artists to plan and facilitate the 2023 show. If you are interested, please contact Diane Dory, dianedory3@gmail.com, or Sandy Cahill, sandycahill@beweaveme.net

Kaw Valley Fiber Guild June Conference

The **Kaw Valley Fiber Guild** will be hosting the annual statewide conference of the Kansas Alliance of Weavers & Spinners in Lawrence, Kansas, from June 9-11, 2023.

This year's conference theme is: **Connect, Learn, Create.**

www.kansasweaversspinners.com

Kansas City Art Institute Fiber Department The Warehouse

The 10,000 sq. foot Warehouse, located a block from campus, provides students with one of the best-equipped fiber programs in the nation. The building includes a gallery, a dedicated studio for each student, and classroom space.

The equipment and facilities encompass a variety of technology including hand, mechanical, electronic, and industrial tools: including:

- Multi-harness floor looms
- Electronic knitting machines
- CAD lab for designing woven, printed, embroidered, and knitted fabrics
- State-of-the-art Jacquard loom
- Fully-equipped dye lab
- Surface design/silkscreen studio with custom-made print tables

https://kcai.edu/academics/Majors_Minors/majors/Fiber/



NEW! Member spotlight

With this new (monthly, I hope) feature, I want to focus on the talents of our seriously multitalented KCWG members.

Please don't be shy – I encourage you to volunteer to show your work, websites, blogs, and history of working with fibers. You don't have to be an expert or a professional fiber artist. If you are a passionate gardener, baker, writer, teacher, or book reader, or have other mad skills, we would love to know more. You can send me a brief bio, links, etc., and I can write it up in first or third person or you can write it yourself.

If you have a photo of your work or something else of interest, send it along as well.

Here's a possible format to get you started:

- Basic bio, where you're from, etc.
- Your fiberarts "journey"
- Best job
- Worst job
- Minor/major claim to fame
- Current fiber work
- Favorite books/podcasts, etc.
- Pets?
- Any other fun facts about you, your interests
- Where we can see your work

I'll start off easy, and tell you who I am, and what I've got going on.

I have been mostly a knitter "all" my life (okay, from maybe age 8), and I've worked in pretty much all fiber mediums – except for tatting. That one never really grabbed me. I'm from DC and lived in that area including downtown for most of my life. After leaving DC, I had a tiny fiber farm with Leicester Longwool sheep and mohair goats in Berkeley Springs, WV. I had a little yarn shop in town as well. The Second Great Depression™ took care of that quite neatly, and I wound up driving a vintage 34' RV across country with four cats, ending up in Portland Oregon. For about five years, I was a licensed medical marijuana grower there. PDX is a **major** fiberarts destination – however, a very expensive place in which to live. In 2016 I made my way over to KCMO, then a half step over to Sugar Creek in 2018.

I jumped into Ravelry in 2007 and am very active there. Ravelry, as you probably know, is an amazing resource for weavers. The Warped Weavers group is filled with knowledgable, helpful people who can answer just about any question you come up with.

I've been weaving for 18 years, and **seriously** weaving for just the past five though my interest goes back a lot farther. I bought my first weaving book when I was 14, because I ~~wanted~~ **needed** to know how looms worked – but never owned a loom until 2006.

Fun Facts

- Best job – sewing costumes for the Washington National Opera. Second best, graphic designer for NPR in downtown DC.
- Worst job – probably what I'm doing now part time, working in an amazon warehouse. Though 10k steps a day is an unexpected bonus.
- Minor claim to fame – in college, I took puppetry for a year with Kermit Love (he was a key puppet creator for Sesame Street).
- Major fiber weakness – buying looms and yarn for my "business". I can justify **anything**. Just ask my loom pusher (I won't name her, but she's a member here).
 - Current fiberarts work – dyeing and weaving, focusing on deflected double weave for wearables and felted rugs.
 - Pets – down to one cat!
 - Number of looms: 5
 - Books – early 20th century English humor, P.G. Wodehouse, H. H. Munro (Saki), and E.F. Benson. If you are familiar with Lucia and Miss Mapp, we are kindred spirits.
- You can find my work and blogs at www.artisanhandweaving.com, pocketmeadowfarm.com and in the May/June issue of Handwoven (!!!). On Ravelry, I'm pocketmeadowfarm.



Ellen Kardell, 2nd VP, Newsletter

Image: handdyed tencel warp.

Rowland Ricketts: Invisible Blue

Rowland Ricketts utilizes natural indigo dyes and historical processes to create contemporary textiles that span art and design. Recent works make palpable the invisible aspects of the color's creation as well as the invisible histories and forces that lie below the surface of this globally revered dye.

Ricketts is collaborating with Fiber, Foundation, and Liberal Arts students on an indigo-dyed installation in Vanderslice Hall at KCAI! Visit the campus to check it out from March 31 through April 7.

Wearable Art

On display February 15th to March 11th



Sue Metzlor
hand felted vest



Winona Thornton
hand woven triangle shawl



Kathryn Worley
hand dyed scarf



June Sun
hand felted wrap



Sandi Grimm
hand knitted scarf



Marei Blank
knitted jacket



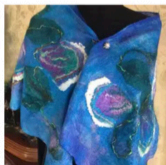
Sandy Cahill
handwoven shawl



Diano Dory
handwoven shawl



Anna Walker
hand felted scarf



Judy Santner
hand felted wrap



Glenda Flanagan
hand dyed scarf



Barrie Mason
hand felted scarf



Wearable Art Show

12 Guild members have gathered their best Wearable Art pieces for a group show at Images Art Gallery, located at 7320 West 80th Street, Overland Park, KS.

The show will have been extended through April. Gallery hours are Wednesday - Saturday, 10-5.

More information: call or text Sandy Cahill (913) 709-1923.

Lineages

New work by Debbie Barrett-Jones and Kristine Barrett
March 2 - May 27, 2023 at the Leedy-Vouklos Art Center

The Leedy-Vouklos Art Center
2012 Baltimore Ave.
Kansas City, MO 64108

<https://www.leedy-vouklos.com/>



KCWG Website Update

Guild Website

Using the 2023 Guild Directory, the [Links page](#) on the Guild website has been updated to include member websites. Please let Janet Meddings know if you have any updates or wish to list your website on this page. Contact her at weaversguild@gmail.com to suggest content for our website.

Newsletter Deadline

Submit your ideas, articles and photos to msellenk@gmail.com by the 25th of each month.

Guild Resources



The Felting Study Group meets to encourage and help each other develop skills in all forms of felting. They meet the last Thursday of every month at 10:30 a.m. in the home of one of the participants. To find out where they are meeting this month or to learn more about the study group, email Judy Santner at jsantner3@hotmail.com.

Guild Library The Guild maintains an extensive library of books, magazines, and videos that can be checked out by members in good standing. Publications may be checked out for one month with up to two renewals as long as there is no waiting list for the item. Members are responsible for replacement costs of items lost while in their possession. To see our library inventory list and/or contact Debbie Buddish, Guild Librarian, visit: www.kcweaversguild.org/library-equipment.

Mentoring Experienced weaving mentors are available to Guild members that can provide you

with guidance in a way that makes sense while keeping your best interests in mind. To request a mentor in your area, or if you are a Guild member interested in coaching a new weaver, please contact Jacqueline Jacobson at hjsilversonic@yahoo.com. **Scholarships** We offer an educational scholarship for which any Guild member in good standing may apply. For more information and to download an application form visit our website at: www.kcweaversguild.org/membership

Handling Used Looms Be sure to check out the new document [Handling Used Looms](#) that you can share with anyone who has come into possession of a loom and wants to know how to proceed.

KCWG Care Connection If you would like the guild to send a note to a member in need to let them know we are thinking of them, please contact us at weaversguild@gmail.com.

15 handwoven, crochet and fleece blankets donated March, 2023 (right).

Project  Linus
Providing Security Through Blankets

Community Service 2023: Project Linus of Greater Kansas City

Project Linus is a national organization with an active Kansas City chapter. They provide new handmade blankets to children in the Kansas City area who are seriously ill, traumatized, or otherwise in need. Items are lovingly created by volunteer "blanketeers." Blanketeers are individuals who make blankets and volunteer to help Project Linus of Greater Kansas City.



Donations can be handmade blankets, money, time, and supplies. However, our Guild's focus is on handmade blankets.

Visit Project Linus of Greater Kansas City <https://www.projectlinuskc.org/> to learn more.

Refreshments

Volunteers Needed for 2023!

During our meeting we enjoy a break with light refreshments, visit with each other, and check out our show & tell items. The refreshments are provided by you, our Guild members.

Sign up online at: www.kcweaversguild.org/treat-sign-up or let us know at the next meeting when you can bring a treat. Thank you!

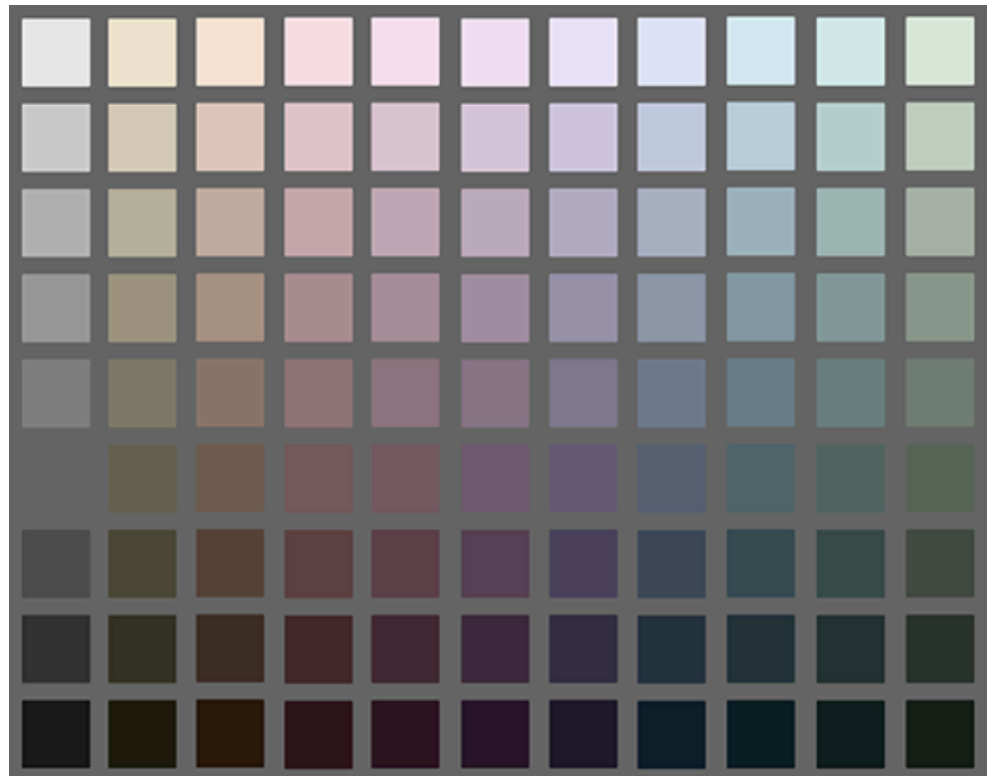


Aline Ponce, pixabay.com

Online Weave-along

Tien Chiu and Janet Dawson are planning a free Weave-Along in the Handweaving Academy for March. This one's all about color!

They will be opening registration for it March 17, and starting the Weave-Along March 24. Clear those looms and get ready!



In this Weave-Along, you'll be learning all about using muted and neutral colors - the less brilliant (but beautiful!) colors in your yarn stash.

Sign up for notifications at:

https://handweavingacademy.com/?__s=cco05p3jkgx4vzf9mpz

Jim Bassler

Craft in America: Origins Episode

Fiber artist, weaver and teacher Jim Bassler on low tech, ancient processes, cochineal dye explorations, pieced tapestry, nettle yarn, resist dyeing and his unique maker philosophy are beautifully expressed in this short video.



https://www.youtube.com/watch?v=rBGtiYViRWM&list=PL8_liaOa0Fcg7YHHH5aa-dtKv0KYcOhdM&index=14

Cochineal Cultivation

Why Tiny Cactus Bugs In Red Food Dye Are A \$35 Billion Industry

Found in everything from red M&M's, strawberry yogurt, cosmetics, paints for fine artists, and of course, fiber dyes, the cochineal farming industry is becoming increasingly endangered due to the rise of synthetic dyes – even while interest in natural dyes grows.

<https://www.youtube.com/watch?v=iBNySB2jpVg>

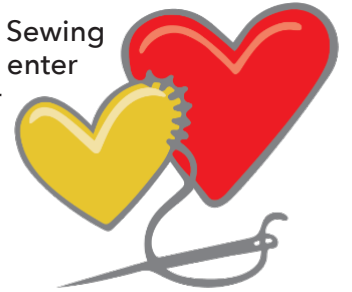


Sewing Labs Volunteer Opportunity

By Janet Meddings

The Sewing Labs mentoring program started this past January and I have been participating over the past three months. I'd like to report that it is a lot of fun. I've met some of their students over a provided meal and got to know each one a bit better. Additionally, I have gained a better understanding of the mission of The Sewing Labs. In March, the Sewing Salon Training Program had 12 new students enter their workforce training program. That means they have 12 openings for volunteer mentors to come alongside them over a catered meal once a at The Sewing Labs (thanks to a generous benefactor).

Won't you volunteer to offer your guidance, advice, and support?
NO SEWING EXPERIENCE IS REQUIRED. Email Eileen@thesewinglabs.community to let them know you are willing to join in. This volunteer opportunity is a great fit for all of us fiber enthusiasts. Thank you for your kind consideration.



The Sewing Labs™
Create. Inspire. Thrive.

ScrapsKC Teaching Opportunity

This summer **ScrapsKC**, along with the **Toy & Miniature Museum**, is hosting a professional development workshop for teachers to learn the history of weaving and the basics of weaving techniques. This workshop will include examples of how weaving can be used to teach math and social studies content. They are looking for skilled weavers who can assist teachers as they try out weaving.

The workshop will be June 21 at the Toy & Miniature Museum from 10am to 3pm. If anyone is interested in volunteering for all or part of the day, please contact Keli Campbell at education@scrapskc.org.

ScrapsKC is a Creative Reuse Center that sells repurposed art, craft, and school supplies. You can find out more about their mission on their website: www.scrapskc.org.



scrapskc

SAVE THE DATE
SCRAPSKC & THE NATIONAL MUSEUM OF TOYS & MINIATURES

**WEAVING
IN THE
CLASSROOM**

June 21 10 AM TO 3 PM	The T/m Museum TURMAN EVENT SPACE
	A professional development opportunity for all educators. Integrating the art and history of weaving into math and social studies.

The National Museum of Toys and Miniatures
5235 Oak St., Kansas City, MO 64112 | Phone: (816) 235-8000
Email: info@toyandminiaturemuseum.org

Classified Ads

Flax hatchel or comb

Antique flax hatchel or comb. Approx. age and condition: 1800's. Very good condition. Could use to comb wool too.

Price: \$25

Contact Linda Stoker, email lstoker98@gmail.com, or phone 913-620-6968.

(3/23)



4 Harness Norwood Cherry Loom

Pristine condition. 30 year old Cherrywood loom. 4 harness. Sectional beam. I bought it from the original owner but need something smaller. Located in KC. Comes with matching bench. A beautiful loom in perfect condition!

Price - \$1100

Contact Denise Balukas via email at Dlbalukas@gmail.com or phone 415-308-1374.

(12/22)



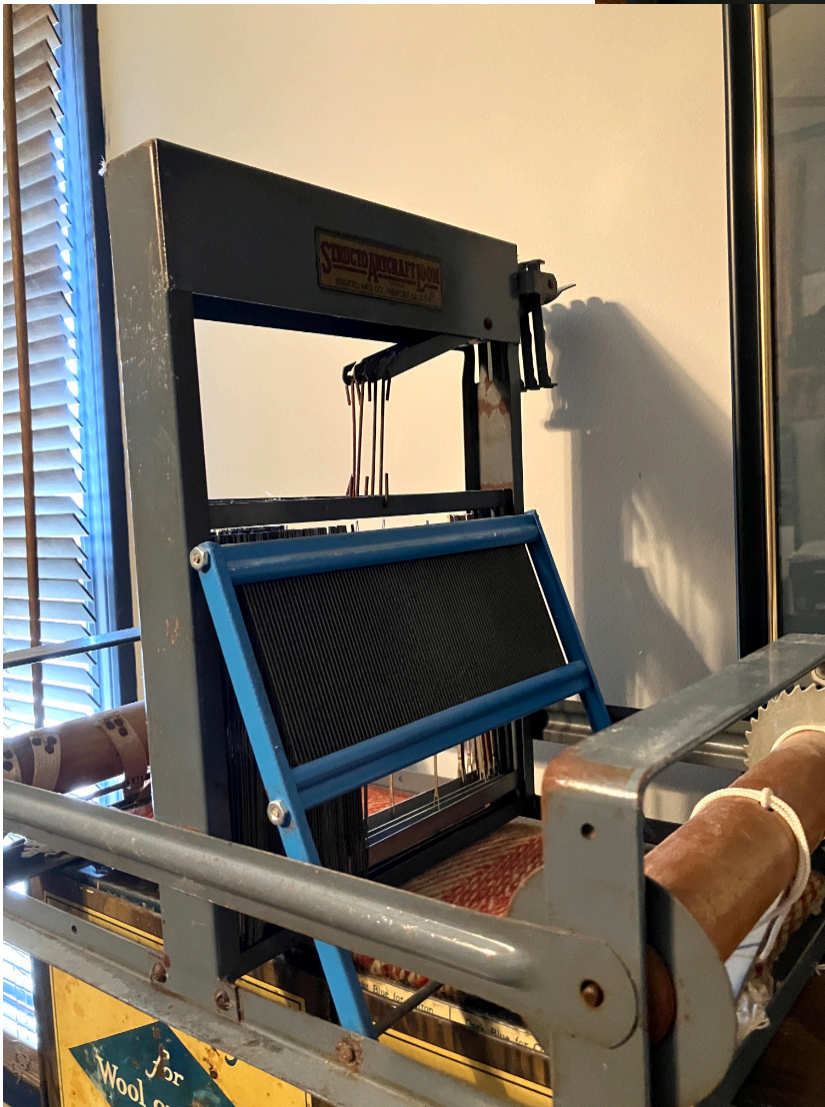
Structo portable loom

Very good condition, new 12 dent reed.
Hard to find vintage piece excellent for
sampling.

Contact Linda Stoker, email
lstoker98@gmail.com, or phone
913-620-6968.

Price - \$75

(3/23)



6 Harness Vintage Loom – FREE!

This is a 6 harness floor loom, weaving width approximately 45 inches. Brand is unknown, the label is unreadable. Obviously it needs some work but it is priced accordingly at \$0!

If interested, please contact Sylvia Crawford by phone at 785.580.7559, or email at crawfordsylvia56@gmail.com

02/23)



Schacht 8 shaft 45" Oak Floor Loom

Excellent condition, Includes loom bench. Lees Summit, MO

Price - \$3000

Contact Pamela Michael at pnjmichael@gmail.com, or at 816-809-0723

02/23)



Index of Free Digital Resources

Podcasts, videos and websites...tools to inspire fiber art creativity

Podcasts

[CLOSE KNIT](#)

[FIBER NATION, INTERWEAVE](#)

[FIBER TALK](#)

[HAPTIC & HUE](#)

[LET'S MAKE YARN](#)

[STITCH PLEASE](#)

[THE FIBER ARTIST](#)

[THE LONG THREAD](#)

[THE PROFESSIONAL WEAVER](#)

[THE UNRAVELING](#)

[THE YARNIACS](#)

[TWO EWES FIBER ADVENTURES](#)

[WEAVE](#)

[WEAVECAST](#)

[YARNS AT YINHOO](#)

Video Programs, Panel Discussions, Presentations

[BOTANICAL COLORS](#)

[SURFACE DESIGN ASSOCIATION](#)

[TEXTILE TALKS](#)

[TEXTILES & TEA](#)

[TEXTILE MUSEUM AT GEORGE WASHINGTON UNIVERSITY](#)

[VICTORIA AND ALBERT MUSEUM](#)

Articles, E-Books, Monographs, PDF Instructions

[ANDEAN TEXTILE ARTS](#)

[DARYL LANCASTER](#)

[HANDWOVEN MAGAZINE ARTICLES](#)

[MAFA 2019 TOWEL EXCHANGE E-BOOK](#)

[PRACTICAL WEAVING SUGGESTIONS](#)

[WEAVE TO DYE](#)

[2012 SCARF SWAP FREE PDF ANN ARBOR FIBERARTS GUILD](#)

[THE TEXTILE CENTER IN MINNEAPOLIS](#)

[THE SPENCER ART REFERENCE LIBRARY](#)

[ARIZONA UNIVERSITY ON-LINE DIGITAL ARCHIVE](#)

[WEAVEZINE ARTICLE ARCHIVE](#)

[PEGGY OSTERKAMP'S WEAVING TIPS](#)

[JANE STAFFORD TEXTILES KNOWLEDGE BASE](#)

Online Design Tools

[PLAID MAKER](#)

[DESIGN SEEDS](#)

[ADOBE COLOR](#)

[COLOURS](#)

[RANDOM STRIPE GENERATOR](#)

[TIN EYE LAB](#)

[WEAVING COLOR MIXER](#)

[PICTIONARY WEAVING PDFS](#)

More resources on our website:
[USEFUL WEAVING TOOLS • GROUPS & ASSOCIATIONS • GUILD MEMBERS FIBER ART & SUPPLY WEBSITES](#)



Ahree Lee, *Ada*, 2019, cotton, linen and wool on canvas.

Weaving Data

Digital computing is deeply connected to weaving. The Jacquard weaving process, first demonstrated in 1801, gave instructions to a loom using holes punched in paper cards—an early form of binary code. Charles Babbage's Analytical Engine (1834), the blueprint for modern computing borrowed elements of its design from the Jacquard loom. One element was the punch card, which remained a primary medium for programming and inputting data to computers into the 1980s. The artists in this show investigate the complex relationship between weaving and computers.

See more at <https://sites.google.com/pdx.edu/weaving-data/weaving-data>