

# WEAVERS GUILD *of Greater Kansas City*

[www.kcweaversguild.org](http://www.kcweaversguild.org)

## February 12, 2026

### 2025 Officers:

Sylvia Crawford and Leesa Duby :  
Co-Presidents

Teddy Wiberg: 1st Vice President,  
Programs:

Trudie Byers: 2nd VP, Newsletter

Diane Binkley 3rd Vice President,  
Workshops:

Secretary: Susan Gurley

Kirsten Kakolewski: Treasurer

Barrie Mason: Scholarship Chairperson

### President's Message:

Hello friends,

Our world right now is confusing and stressful, to say the least. We can be grateful that we have crafting to keep us sane. The world will always need art and beauty, in addition to the advocacy of community involvement. The guild provides a supportive space to express ourselves, make mistakes, and grow.

Happy crafting,

Cheers,

Leesa

### Dues:

Yearly dues are \$25 for individuals or \$30 for families. The dues can be paid online at [kcweaversguild.org/membership](http://kcweaversguild.org/membership) or the dues can be paid with a check made out to Weavers Guild of KC and mail to Kirsten Kakolewski 4912 N 126th Street, Kansas City, KS 66109. Members who would like the directory mailed to them should add 3 dollars for shipping.

### Programs:

Teddy Wiberg will tell us about her experience at a Navajo Weaving Boot Camp Workshop in Gallup, NM. The teachers are lifelong Navajo Weavers that learned the art as young girls from their mothers & grandmothers. The Navajo culture & their weaving traditions are inseparable - so it was a fascinating workshop! She will bring samples of Navajo weavings & invites anyone else who has Navajo weavings to bring & share as well.

### Further note:

I can report these Program dates as confirmed: *Teddy*

APRIL - KCAI Senior Student Presentation  
& Fiber Arts Dept Tour - TIME TBD

JULY - Swap and Shop

OCTOBER - Member Challenge

DECEMBER - Holiday Party

### **Weather Cancellation:**

Remember that our policy is that we will meet unless the local schools are cancelled. However, everyone must think about her own safety when considering whether or not to join us in January.

### **Jacob Sheep Shearing Day at Pam Piepergerdes farm on March 7 in Excelsior Springs**

Pam has a flock of registered Jacob sheep & specializes in breeding for the lilac & white color. She also has some black & whites. You are invited to come and watch the shearing. You can also purchase a fleece as it comes off of the sheep.

Remember to wear appropriate farm type clothing suitable for the weather. This is an outside activity, in the pole barn. It will be a fun day. She'll have a big pot of coffee and bottled water available. She's looking forward to seeing you and showing off the Jacobs.

The shearing starts at 8 am. The address is 2122 Sorrel Drive, Excelsior Springs, MO 64024. Pam's phone number is 816-520-2331. Feel free to call if your GPS is having trouble with the location. The road has a square corner in it, so the name changes at that corner from a numbered

street, NE 124th, to a named street, Sorrel Drive. The road ends at Pam's front door.

### **Ideas for a SnowyDay via Kathryn**

#### Art Exhibits –

*Painted Worlds – Mesoamerican art*

Ends February 8, 2026

Nelson-Atkins Art Museum – KCMO

*Aymara weavings*

St. Louis Art Museum (Forest Park)

Jan 30-Septembr 13, 2026

*Boro: Traditional Mended Textiles*

February 6-July 20, 2026

International Quilt Museum – Lincoln Nebraska

#### Book:

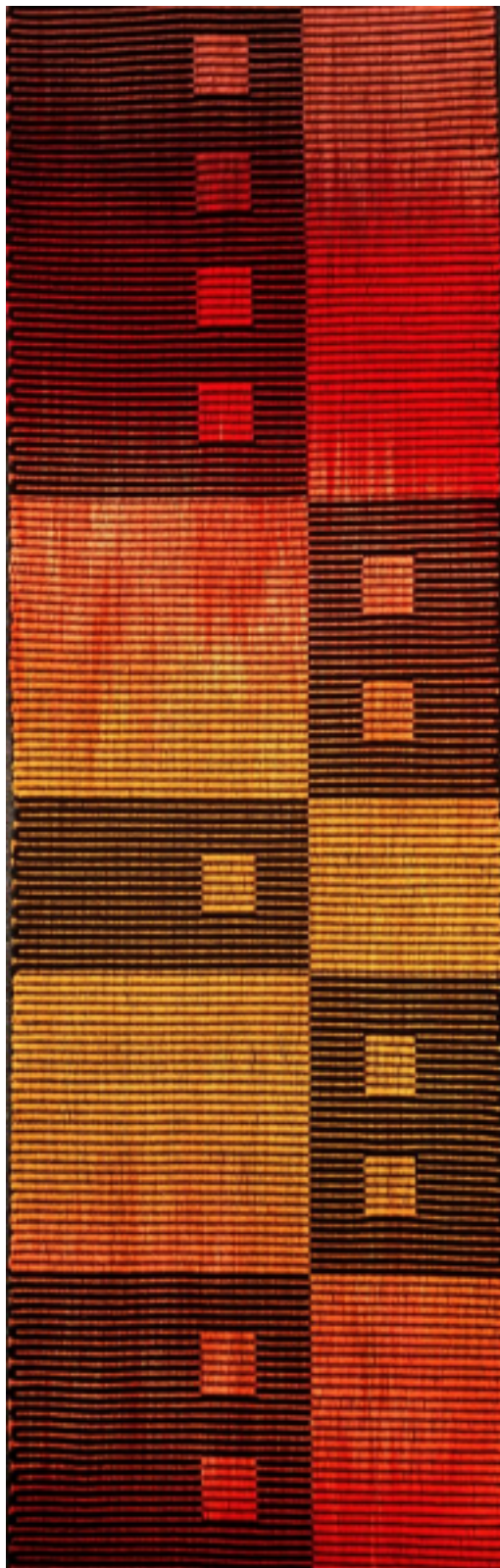
*With Her Own Hands: Women Weaving Their Stories* -Nicole Nehig

Throughout the centuries and around the world, women have used textiles to tell their stories, release tensions and find fulfillment in their lives. Nehig, a clinical psychologist and knitter, brings these stories to life and shows the importance textiles have had on our cultures.

### **Classes**

Yarn Barn has just announced their new schedule of winter classes. See their website for more information, [yarnbarn-ks.com](http://yarnbarn-ks.com).

## WARP PAINTING CLASS



Who: Members of the Weavers/Fiber Guild are invited

What: Learn how to dye warps with a painterly look using Procion dyes.

Where: Class will be held at the home of guild member, Becky Stevens

18413 Barryfield Lane, Belton MO 64012

When: 10:00am – 4:00pm

April 25 (May 2 if severe weather on the 25th)

Limit of 12 dyers

Price: \$45

PLEASE BRING:

Water proof apron and old towel

Comfy shoes

Sack Lunch, snacks, drink

4-5 yard pre-wound cellulose warp with cross and ends firmly secured, no more than 250 ends

4-6, 16 ounce plastic containers, old sour cream/hummus containers are perfect

A container to transport wet warp – I use an underbed plastic storage container 8906789–  
<https://www.walmart.com/ip/Sterilite-66-Quart-Stadium-Blue-Ultra-Storage-Box/45924275?w113=2955&selectedSellerId=0&wmlspartner=wlp>

Questions? Email Becky at

[becky@beckystevens.net](mailto:becky@beckystevens.net)

## **Creative Hand**

The 2026 show and sale will be here before we know it and we have a lot to get accomplished with the upcoming move to the Merriam Community Center. We do have a few open Board positions needing to be filled.

Co-Chair: main responsibilities are to assist the chairperson and other positions as needed, answer and or help with artist questions

Setup Coordinator(s): main responsibilities is to determine display fixture needs, communicate needs to artists, provide layouts to applicable parties, provide direction the morning of the show. This can be a shared responsibility between 2 people.

Publicity: main responsibility is overseeing the print, electronic, website, and social media accounts and coordinating with the publicity team to ensure the promotion of the show and sale.

If you are interested or have additional questions, please reach out to Karen Ecton at [karen.ecton@gmail.com](mailto:karen.ecton@gmail.com) or 913-522-5347.

## **Planning meetings:**

The move to Merriam Community Center presents extra planning this year. If you are interested in providing input for the sales floor layout, we are having our first meeting on Sunday, February 22nd from 1:30 - 3:00 in the Founders Room at Merriam Community Center. The object of this meeting is to distribute copies of the room drawing, provide rules/regulations we must follow, and general guidelines plus timeline from the board. You will be able to see the full space and take photographs to aid you while formulating a proposed layout. We will get back together on Sunday, April 19th from 1:00 - 3:00pm at the Merriam Plaza Library to review and discuss plans to settle on one concept for further refinement. Future meetings will be announced at a later date for load in / load out logistics, and signage plans for the day of the event. Everyone is welcome to attend these meetings so if you have special talents, please come and share your knowledge so the guilds, our artists/members, and Creative Hand can shine bright in 2026.

**For Sale:**

**Anne Sly**

Email: [aksgys@gmail.com](mailto:aksgys@gmail.com)

Phone: 816-898-2044

Norwood 50" Cherry jack loom, 4 harness, 6 treadle, good condition approx 40 years old. Large loom bench (36" x 11" x 22") with storage boxes 3 reeds, with dents 8/inch, 10/inch, 12/inch spool rack, (carries 28 spools) Norwood tensioner (with 3 reeds 8/inch, 10/inch, 12/inch) 3 shuttles. Located in KCMO, must pick up, no shipping. Price: \$1,000

**Rachel Landers**

Email: [rukuwolf@gmail.com](mailto:rukuwolf@gmail.com)

Phone: 7858404568

Cranbrook loom 10 treadle, never used by us, price: \$4,000

